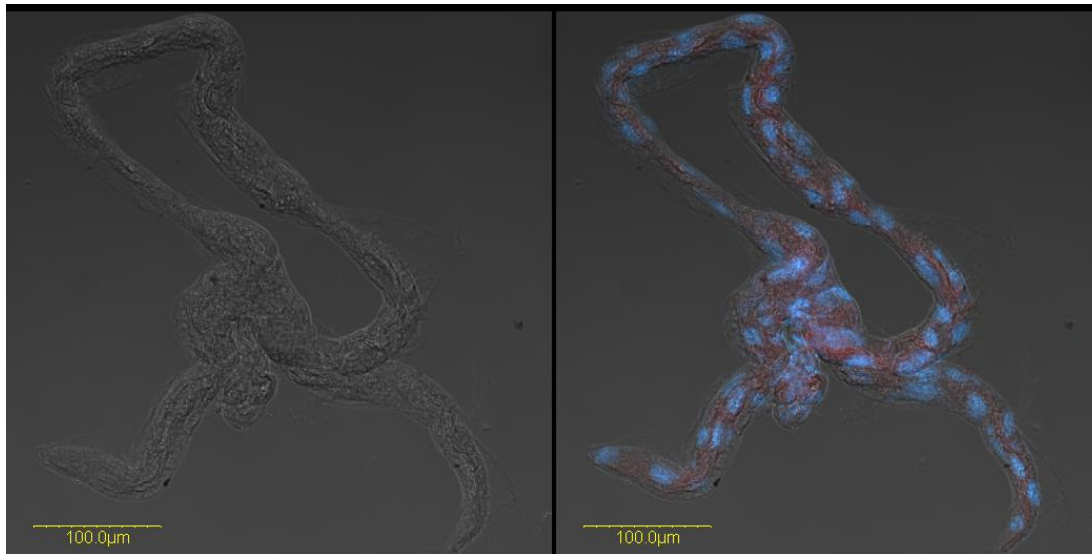


483

484



485

486 **Figure 6.** FISH of *Rickettsia* on dissected gut of an adult *B. tabaci* female.
487 *Rickettsia*-specific probe (red) conjugated to Cy3 was used and the gut was stained
488 with DAPI before mounting and visualization under Olympus Fluo-View 500-
489 Confocal microscope. Specimen at below left corner with no florescence is a
490 control.

Unedited version published online