





















































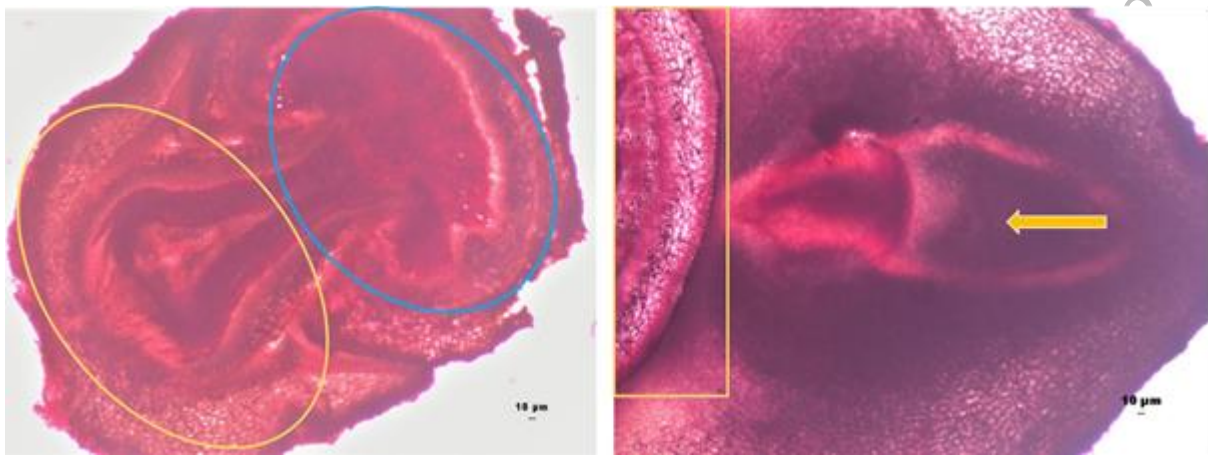






Supplementary material:

Fig. S1. Microscopic section showing haustoria “horse shoe” connection between *Santalum album* and host plant (yellow oval represents host tissues and blue oval represents sandal tissues); b. Initiation of haustoria connection (Yellow rectangle shows host tissues and yellow arrows shows the direction of haustoria development)



Unedited version published on